

The Platform for Decision-Makers.

09/2005 FISCHER + LANGE



bio nord

Biotechnology Region
Bremerhaven Bremen

Bremerhavener Gesellschaft
für Investitionsförderung
und Stadtentwicklung mbH

bis

Bremerhavener Gesellschaft für Investitionsförderung
und Stadtentwicklung mbH
Am Alten Hafen 118
27568 Bremerhaven
Germany
Tel.: +49 (0)471 · 9 46 46 60
Fax: +49 (0)471 · 9 46 46 69
wirtschaft@bis-bremerhaven.de
www.bis-bremerhaven.de

big

BIA Bremer Innovations-Agentur GmbH
Ein Unternehmen der Bremer Investitions-Gesellschaft mbH

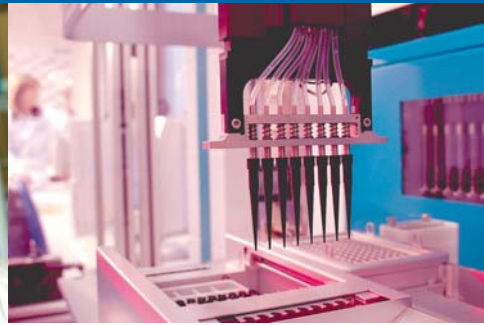
BIA Bremer Innovations-Agentur GmbH
Kontorhaus am Markt
Langenstrasse 2-4 (entrance: Stintbrücke 1)
28195 Bremen
Germany
Tel.: +49 (0)421 · 96 00 - 30
Fax: +49 (0)421 · 96 00 - 830
mail@bia-bremen.de
www.bia-bremen.de

www.bio-nord.de





New building of the Alfred-Wegener-Institute for Polar and Marine Research



DNA analysis robot in Bremerhaven's Biotechnology Centre for faster and more reliable results in bioanalytic services

● ● Bremen. Bremerhaven. The “Double-Helix” with Driving Force!

Blue and red biotechnology - giving you the know-how of today for all your tomorrows!

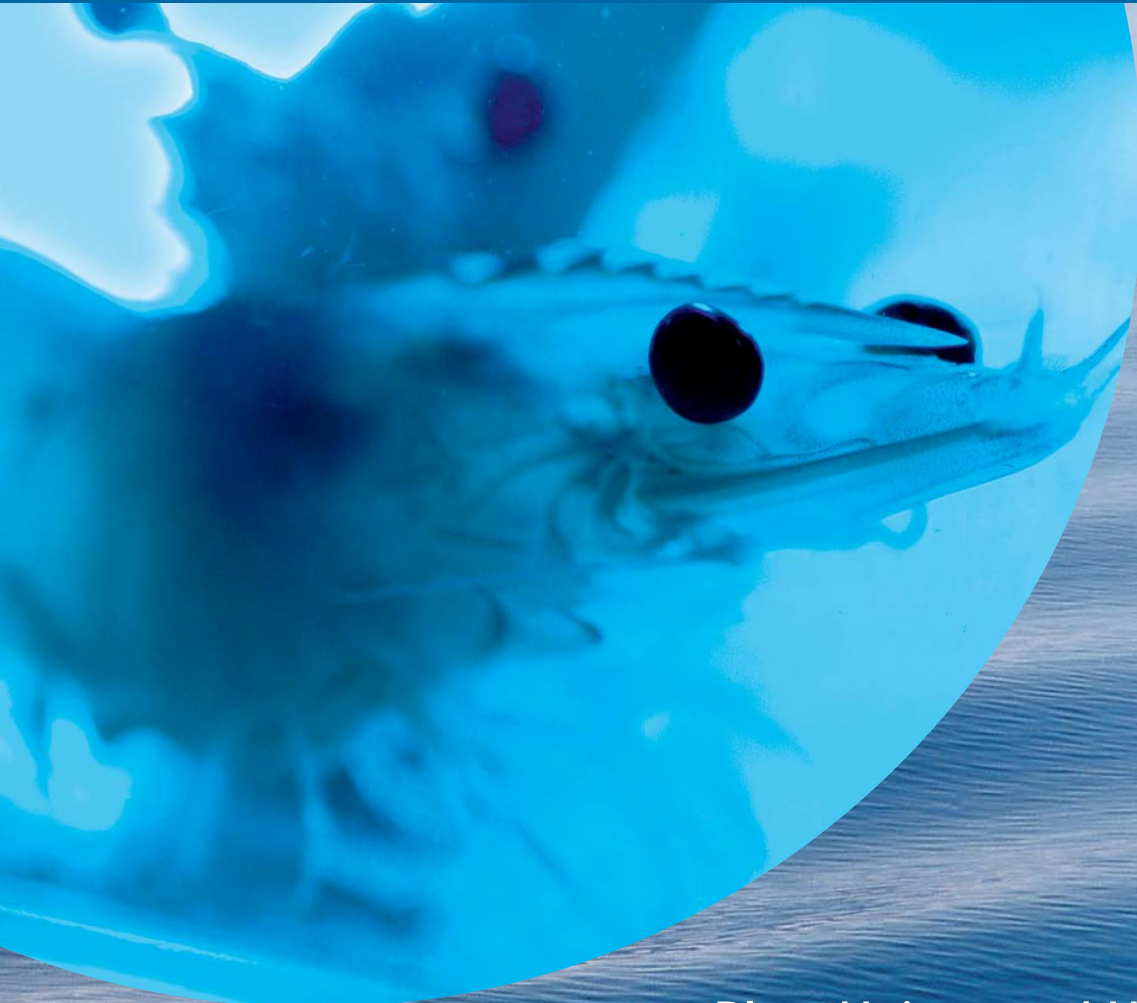
The State of Bremen offers an ideal environment for both industry and science. The paths are short, decisions are taken quickly, and arrangements can be made in an unbureaucratic manner. As international centres for the food industry that are located strategically close to the sea, Bremen and Bremerhaven offer outstanding conditions for the biotechnology sector.

Taking a closer look is well worthwhile. Top institutes for international research, such as the Alfred-Wegener-Institute for Polar and Marine Research (AWI) and the Max Planck Institute for Marine Microbiology (MPI) are able to provide creative system solutions for industry and trade. The local companies of the food-processing industry benefit from

molecular-genetic methods for tracing the ingredients and additives within the scope of quality assurance. At the interface to medicine, dynamic young companies develop modern diagnostic methods for the early detection of various kinds of cancer. The development of medical additives and chemical substitutes are further growth markets for the future.

The pool of world-class specialists and institutes that has been established in Bremen and Bremerhaven for the vibrant new fields of biotechnology applications, especially in recent years, guarantees the best possible opportunities for start-ups and cooperative ventures.

Mechanisms of tumour genesis - a research focus at the Centre for Human Genetics



Ecological production and farming of shrimps at an aquaculture facility



Micro-encapsulation for the food and pharmaceutical industries



Special types of UV-absorbing pigments are extracted from macroalgae for further study.

● ● Blue. Unique and Highly Concentrated.

Internationally outstanding research meets world markets in the food industry.

The sea is a source of new ideas and exciting discoveries. A single drop of seawater contains a world of life. Blue biotechnology provides the basis for economical utilization of the ocean's resources. The substances and compounds extracted from seawater serve as a foundation for innovative products with a high market potential in the fields of nutrition, wellness and pharmaceuticals.

Yet another point in favour of Bremen and, above all, Bremerhaven. Where the magic of the sea and the results of high-level research flow together, new findings lead directly to entrepreneurial success. This profitable transfer of know-how can be seen, for example, in the extraction of natural marine substances, the composition of aromas and new applications in micro-encapsulation.

Oceans of potential!

Algae, fish, enzymes – the ocean supplies valuable raw materials not only to the foodstuff industry but also for medicines and cosmetics. Research into natural substances, bioproduction and genomics all provide a unique concentration of know-how in Bremen and Bremerhaven from which you also stand to profit. The natural colourant violacein in blue jelly babies is just one of the many “sweet” examples. There are many more. The MPI is investigating the genetic potential of marine microorganisms regarding their ability to adapt to changing environmental conditions. The AWI expeditions into the icy polar regions are yielding new approaches in materials science and product engineering. And the Bremerhaven Institute of Food Technology and Bio Process Engineering (BILB) is developing innovative products for the food industry.





Isolating the genetic material for subsequent pathogen diagnostics

Red. Germ Cell for the Future.

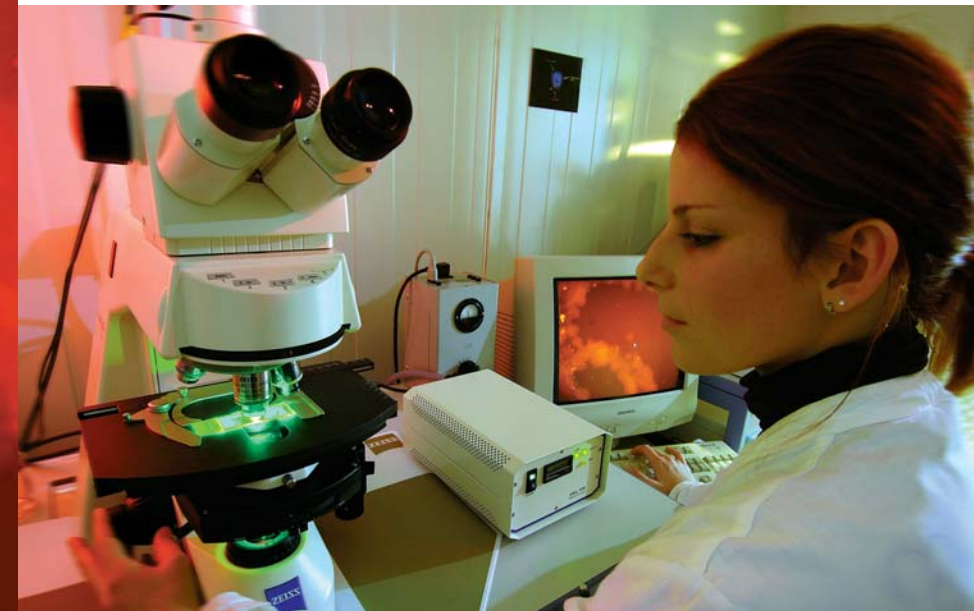
New opportunities in medicine.

A milligram of "future code" and a sure instinct for success provided the germ cell for the Centre for Human Genetics: red biotechnology from Bremen. Start-ups developing new diagnostic products for the detection of cancerous diseases are growing here together with companies producing medical additives for the pharmaceutical industry.

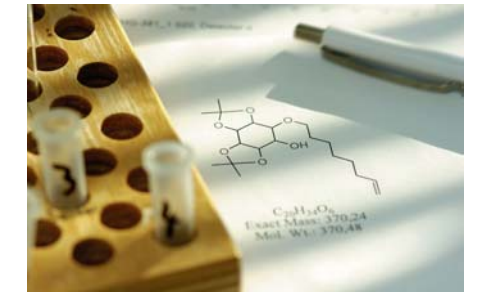
In this way, young enterprises from the State of Bremen are transformed into attractive partners for you. They offer high-value services, ranging up to support in carrying out clinical testing procedures.

One platform - many minds.

In Bremerhaven and Bremen, entrepreneurial activities are closely intermeshed with the scientific landscape. In 2001, added thrust was given by the founding of the International University Bremen (IUB) and new university institutes in both cities. New platform technologies for the manufacture and processing of proteins, the research into nano-biotechnological systems for selective product separation, and bioinformatics are all providing fresh impetus. Acting together as the "City of Science 2005", Bremen and Bremerhaven are presenting their institutes as attractive cooperation partners for trade and industry.

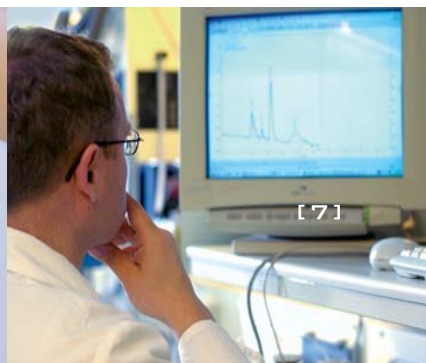
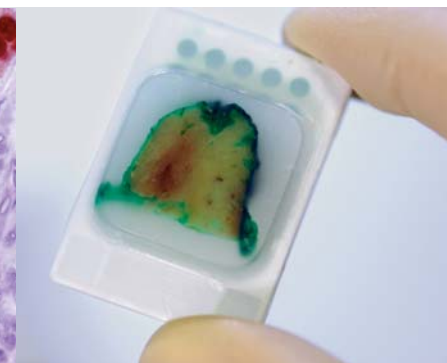
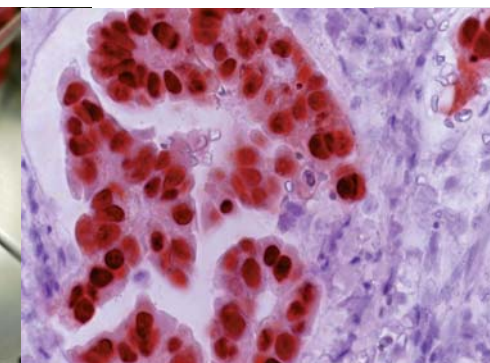


Development of diagnostic products for detecting cancer



Tissue section of a mammary carcinoma, oestrogen receptor expression

Highly complex synthesis process for the purifying of chemical building blocks for the pharmaceutical industry



Bremerhaven Bremen. Infrastructure. Networks.



Biotechnology Centre in Bremerhaven:
Joint use of the technical section
cuts costs for all



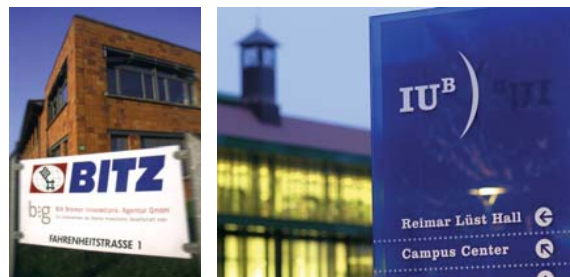
Centre for Clinical Pharmacology at the
Klinikum Bremen-Mitte with the latest technological
developments for physicians and the medical
industry

●● Nodal Points. Science Community as the Pacemaker.

Space for innovation with successful networking.

Make way for science and industry: the biotechnology nucleus of Bremen and Bremerhaven offers an infrastructure that has been expanded in a targeted way. Here you will find space for innovative processes and an exchange of know-how. New trails are being blazed by the Biotechnology Centre in Bremerhaven, the Bremen Centre for Innovation and Technology (BITZ) in the Technology Park, and the International University Bremen.

The technical section in the Biotechnology Centre in Bremerhaven provides the resident companies with the most modern equipment and devices, making it possible to reduce the high level of capital tie-up which would otherwise be necessary in the start-up phase. Professional exhibition participation, specialist conferences and joint lobbying permit continuous growth in knowledge transfer and external perception.



With a treifold network of support.

Teamwork gives you a good tail wind. What does this mean for you? Anyone who sets sail in Bremen or Bremerhaven within the biotechnology sector can count on valuable assistance. The players in the business are networked on three levels. The non-profit organization "Unternehmensverband Life Sciences Bremen e.V." acts as a local lobby. In cooperation with the world of science, a national anchor is provided with the BioRegio network of the federal states. What is more, all the institutes - from AWI and

MPI through the institutes of the Technologie-Transfer-Zentrum Bremerhaven (TTZ) to the various universities - have cultivated international contacts and Europe-wide cooperations. So, when organizing and executing third-party projects, you have the added advantage of being able to tap into a wealth of experience. In Bremen and Bremerhaven, new ideas are carefully nurtured to become successful companies.

High-tech laboratory for the development
of innovative tumour diagnostic testing
procedures



●● Maritime. Medicine. Oceans of Assistance!

We help you to get moving!

Are you still thinking things over? Or is your concept ready for action? Whatever your situation, we can help you navigate into smooth waters. In keeping with our Hanseatic traditions, we like to get down to business: we arrange meetings for you, set up the essential personal contacts, and let you become a part of our dynamic biotechnology network. At the same time, we help you look for suitable space to grow your ideas in an economical way. Talking about costs: Where can you find strong partners? For what assistance funding are you eligible? How about venture capital, investment and repayment? The answers to these questions and many more represent the sound basis of a tailor-made assistance package for you and your fledgling enterprise.

Quo vadis?

The short paths in Bremen are not only to be found for traffic and transport on land, through the air and on the water – you will find them also from person to person, from founder to decision-maker, from science to industry, from the idea to success. And we go the extra mile with PR and lobbying work, image enhancement, political support, and the expansion of scientific facilities and high-performance infrastructures.

We are keeping the “future code” open – for successful perspectives, innovative ideas and the global market.

Maritime. Medicine. Oceans of opportunity.

The “Blue Jelly Baby” project with the natural colourant violacein

